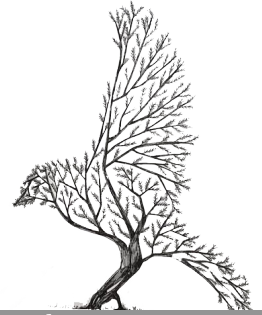




NEWSLETTER

2024



Autumn Issue

chesterheartsupportgroup.co.uk

September 2024

Chairs Chat

Dear members,



What a most entertaining talk we had this month about life in a boarding school. I hope you all enjoyed listening to it and were perhaps surprised how school life was then. This may have been a somewhat different school from others!

In October we are to have a talk about the work of the RNLI. There usually are cards and gifts which can be purchased. Could I please ask that cash be brought for any purchases. Just a reminder about the Christmas Evening on 2 December 2024 could we have names of those who will be there so we can cater for all.

Look forward to seeing you all in October.

Mary Williams
Chairman

chair@chesterheartsupportgroup.co.uk

Socials



Knutsford Christmas Market Saturday 30th November 2024

(Apologies for getting the date wrong at the meeting)

The market features over 120 traders selling the finest foods, drinks, crafts and gifts in the area. It starts at 12.00 and it coincides with the Santa parade at 5.00pm and the Christmas lights switch on at 6.00 pm.



We don't necessarily have to stay for the parade it is up to those who want to go. Cost is £21.00 each and we should leave St Columba's at 10.30 a.m.

Either phone Liz Kevan on 07903 273269 or email elizabethannekevan@gmail.com

Treasurers Report

CHSG would like to keep all members informed of our financial situation, not just the members who attend the monthly session. We have for some years been in a financial downward spiral, running on a deficit year on year, although last year was substantially lower than previous years. On completion of a preliminary financial forecast, it is estimated without generous donations and we estimate without generous donations, fund raising or changes within ourselves, we are projected to exhaust our funds by the close of the 2027/28 financial year.

Therefore, as was stated at the AGM, we intend to increase membership subscriptions next year and will look at other ways to increase revenue. We will ask for a donation of at least £1 for tea/coffee at our social sessions. Another change will see an increase in our exercise classes to £4 per session from 1st January 2025. These steps may extend our operating timeframe slightly. While membership numbers are lower this year and the 50/100 Club is currently self-sustaining, we have an opportunity to explore new strategies for growth and revenue. Our treasurer will keep the group updated from time to time, in the meantime if anyone has any ideas or suggestions, we would be happy to hear from you.

Sandra Magilton - Treasurer
Contact: 01244 677373

email: sandymagilton@googlemail.com



Our Walkers

Enjoying a picnic at Chester Rugby Club after a walk around Christleton, but where's the champagne?

Meeting

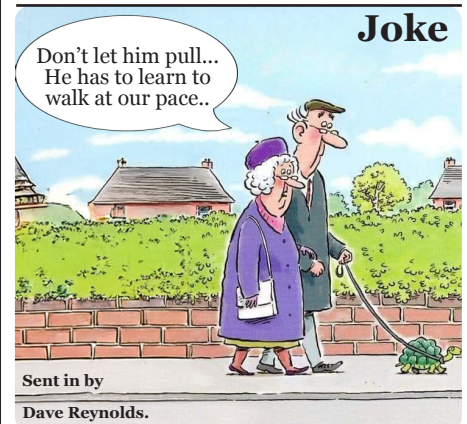
The next meeting is scheduled to take place 7th Oct 7.30pm Columbas House, Plas Newton Ln, Chester

50/100 Club

Winners: £30-Linda Kershaw,
£20-George Durband & £10-Thomas Andrews

Welfare

No welfare to report this month.



Joke

Don't let him pull...
He has to learn to
walk at our pace..

Sent in by

Dave Reynolds.

Speaker 7th Oct

Tracey Kerfoot RNLI ...will be speaking about the RNLI and will bring with her artefacts and a pop-up shop of goodies (cash only).

Organised by Thelma Reynolds.

Membership Reminder

£8. Quite a few members have not yet renewed their membership. If you wish to receive the Newsletter and stay a member of CHSG please renew your membership ASAP.

Thank You. A A Curtis (Membership Secretary)

tony.curtis@chesterheartsupportgroup.co.uk

01244 300699 07729-105042

Cartoons this Month

A little humour goes a long way!

editor@chesterheartsupportgroup.co.uk



'Dynamic pricing is in operation. We'll give you £500 to come in and watch'

Editorial

For Newsletter enquiries, please contact

Editor: editor@chesterheartsupportgroup.co.uk

Walkers Programme

Sep 18 to Nov 6 2024 Inclusive

Contact details: Irene (Home): 0151 356 1485
John (Mobile): 07887 688871



18th Sept - Aldford. Enter Church Lane off B5130 at the Aldford River Dee Bridge and park opposite the church, CH3 6JD. Picnic Lunch. Leaders: Wesley & Daphne Dilworth. Mobile: 07806 421917.

25th Sept - Canal walk from Boat Museum, Ellesmere Port. Park at large car park opposite the Boat Museum, South Pier Road, Ellesmere Port CH65 4FW. Lunch at the museum café. Leader: Irene Roxburgh. Mob: 07759 765868.

2nd Oct - Chester Riverside Promenade. Meet at Chester Bus Interchange for 10.30 a.m.

Lunch at Telford's Warehouse by the canal basin. CH1 4EZ. Leaders: Irene Roxburgh & John Bowyer. Mobile: 07887 688871

9th Oct - Brynford. From A55 take exit for Hollywell and stay on A5026 but do not go down to the town. After passing the Stamford Gate Hotel on your right turn left at traffic lights onto B5121 to Brynford. Pass under the A55 then at crossroads turn right towards the golf club but after 200 yards turn left into a clearing which is the car park. Lunch at Betty Perkins café, The Nant, Glasdir View, Pentre Halkyn. CH8 8BD. Directions: Back along the A5026 then before the slip road to join the A55, turn left down a lane to the café. Leader: Brian Houston. Mobile: 07910 121991.

16th Oct - The Lakes: Dogleston, Church Road, Chester, CH4 9LQ. Enter A483 South from A55. Turn Right at the FIRST SET of Traffic Lights into Rough Hill. At the roundabout turn left onto Lache Lane, then left again at the signpost for Dogleston and in approx 50 yards turn left into the entrance for The Lakes. Continue for some distance down the drive to the parking area. Lunch at the Red Lion in Dogleston; Church Road, CH4 9NG. Leader: Brian Houston, Mobile: 07910 121991.

23rd Oct - Wepre Park, Connah's Quay: Take B5129 into Connah's Quay then left at traffic lights into Wepre Drive. Car Park on left at the top. CH5 4JR. Access also possible from A55 then via Northop. Lunch at the Central Hotel, Shotton (Wetherspoons). Park in public car park across the road from the pub on Charnleys Lane, CH5 1DF. Leader: Brian Houston, Mobile: 07910 121991.

30th Oct - Canal Towpath to The Cheshire Cat. Note: Start time is 10.30am!

Park at Aldi car park in Vicars Cross, Tarvin Road, CH3 5ND. Park at furthest point from the stores. Walk is about 3 miles return. Lunch at The Cheshire Cat. Leader: John, Mobile: 07887 688871.

6th Nov - Tarvin. Park at King George V playing field car park by Scout/Guide hut. Turning is on the right off Tarvin Road just before entering the village. CH3 8EG. Parking is limited so car sharing is advised. Lunch at The George pub in the village.

Leaders: David & Thelma. Mob: 07944 494117.

TRUSTEE MEMBERS

Chairman: Mary Williams
01244 675515

Treasurer: Sandra Magilton
01244 677373

Business Secretary: Barrie Jones
07925 450931

Trustee + Minutes Secretary: Chris Lloyd
07925 855578

Social Secretary: Liz Kevan
01244 535788

Trustee: Dorothy Curtis
01244 300699

Trustee: Jane Chesby
01244 637587

Trustee: Alan Miller
0151 339 3227

Membership Secretary: Tony Curtis
01244 300699 - curtisaa@talktalk.net or
membership@chesterheartssupportgroup.co.uk

Trustee meeting:
Upton Village Hall - 21st October 2024

Non Trustee Posts

Speaker's Secretary:

Thelma Reynolds
01829 741646

Walkers' Secretary

Irene Roxburgh
walkers@chesterheartssupportgroup.co.uk
0151 356 1485

Coordinator of Welfare & Welfare Leader

Lorna Andrewes 01244 851658
07443 450132

Cards & letters to:

Lorna Andrews, Leaside, Station Road
Backford Chester CH1 6NT

Welfare duties also carried out by:

Newton area:

Pat Priest 01244 343758

Upton area:

Lyn Mercer
01244 399767

Saughall area:

Valerie Crawford
01244 880510

Farndon area:

Vacant

Ellesmere Port area:

Vacant



PROGRAM OF ACTIVITIES

MONDAY

Exercise Class - Whitby Sport & Social Club
10.15-11.15 am

Chris Lloyd **07925 855578**

Low Impact Exercise Class - Whitby

Sports & Social Club

11.30 - 12.30 pm

Chris Lloyd **07925 855578**

TUESDAY

Exercise Class - Upton Village Hall
10.00 to 11.00 am

Chris Lloyd **07925 855578**



WEDNESDAY

Walking Group - Up to 4 miles, various venues 10.00 am. Irene Roxburgh

walkers@chesterheartssupportgroup.co.uk
0151 356 1485

